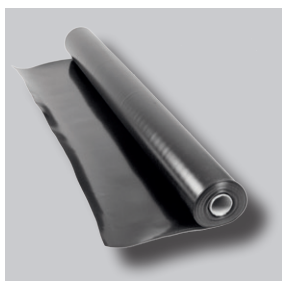


TECHNICAL DATA SHEET

ND TSF-100 Slip and Protection Sheet



ND TSF-100 Slip and Protection Sheet

Heavy-duty plastic sheet on a roll that acts as a separation and protection layer and as the first smooth, non-sticky surface of the slip layer. The sheet is laid loose on top of the waterproofing membrane with an overlap of at least 100 mm.

Applications

The ND TSF-100 Slip and Protection Sheet has been tested by the Technical University Munich (D) as a system component of the Nophadrain Parking Deck System – cars / heavy goods vehicles. This product is also suitable for the Nophadrain Intensive Green Roof System.

The protection efficiency has been proved by an index test done at the Kiwa MPA Bautest GmbH based upon hEN EN 13719 'Geotextiles and geotextile-related products – Determination of the long term protection efficiency of geotextiles in contact with geosynthetic barriers'.

Properties

- Material: high density polyethylene (modified HDPE)
- Thickness: approx. 1 mm
- Weight: approx. 946 g/m²
- Protection in accordance with DIN 18195 – Section 10
- Test:
 - Performance test at the Technical University Munich (D) - assessment of the performance and behaviour of a pavement structure under simulated traffic conditions.
 - Kiwa MPA Bautest GmbH, based on BS EN 13719 'Geotextiles and similar products – Determining the long-term protection benefit of geotextiles in contact with geosynthetic seals.

Product	Dimensions (L x W)	Packaging
ND TSF-100 Slip and Protection Sheet	approx. 50 m x 2 m	approx. 100 m ² , roll

NOPHADRAIN[®]
SMART GREEN ROOF SYSTEMS

Nophadrain BV
Mercuriusstraat 10
6468 ER Kerkrade
The Netherlands

+31 (0)45 535 50 30
info@nophadrain.com

www.nophadrain.com