

# Green roof installation manual

for the Hörmann Berry-Pent Roof Tool Shed Type 2.



## Simple and quick installation

All components of the green roof package are precisely tailored to the dimensions of the Berry-Pent Roof Tool Shed Type 2.

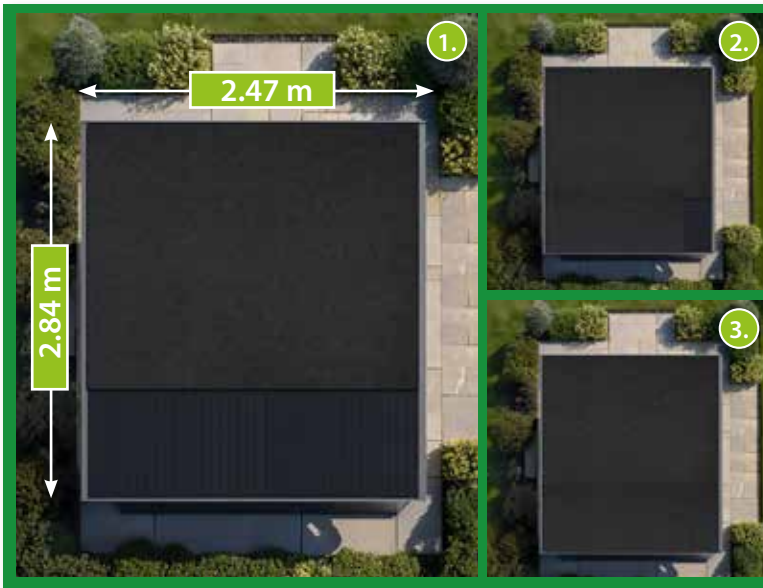
### Scope of delivery of the green roof package

- 300 grams of protective fleece with a length of 5 m and a width of 2 m
- 28 pre-cultivated sedum cassettes with 4-8 types of sedum and a length of 60 cm and a width of 40 cm
- 2 bags of round gravel with 25 kg of gravel per bag
- 1 kg bag of plant based spring fertilizer
- 1 kg bag of plant based autumn fertilizer
- 1 special cutting knife for cutting the 300 grams protective fleece

Note: The green roof edge profile (item no. 1343987) is not included in the scope of delivery and must be received directly from you Hörmann dealer can be ordered.



! Important: Please remove the wrapping film from the pallet immediately after receiving the goods. If you cannot carry out the installation immediately after receiving the goods, please remove the sedum cassettes from the pallet and divide them. Further information with regard to receiving the goods can be found on [www.nophadrain.com/receivinggoods-vegetation](http://www.nophadrain.com/receivinggoods-vegetation).



## Step 1: Installing the protective fleece

To protect the roof from scratches or other damage while installing the sedum cassettes, the roof needs to be protected over its entire surface with the 300 grams protective. Start with dividing the protective fleece of 5 x 2 m into three parts (3 m x 2 m, 1 m x 2 m and 1 m x 2 m). After that, lay down the protective fleece according to the indicated sequence of the installation steps. It's important that the three separate parts of the fleece have an overlap of 10 cm and that the protective fleece also covers the edges of the roof. After installing the sedum cassettes, any protruding parts can be cut off or cut out with the cutting knife.



## Step 2: Installing the sedum cassettes

The sedum cassettes are laid from the ridge, i.e. the high point of the pitched roof. Place the first cassette flush against the edge profile of the ridge and leave a small distance of 2-3 cm from the edge. Then lay the other sedum cassettes in the orientation shown using light pressure in the order specified.



## Step 3: Fill the edge with gravel, water and fertilize

When all sedum cassettes are installed, fill up the space of approx. 4-5 cm left between the edge profile and the last row of the sedum cassettes with gravel. After successful installation, apply the purely plant-based spring fertilizer according to the instructions and then water thoroughly. Further information on the maintenance of sedum roofs can be found on [www.nophadrain.com/en/documentation/instructions](http://www.nophadrain.com/en/documentation/instructions).